



**UTTERN**

RANGE & SPECIFICATIONS

---





# ONCE YOU DISCOVER THE FREEDOM WITHIN SUDDENLY LIFE HAS NO LIMITS.

---

---

Freedom is all about having the space to be your true self. In listening to our customers, we have found how best to refine each element of our craft to make them the best they can be.

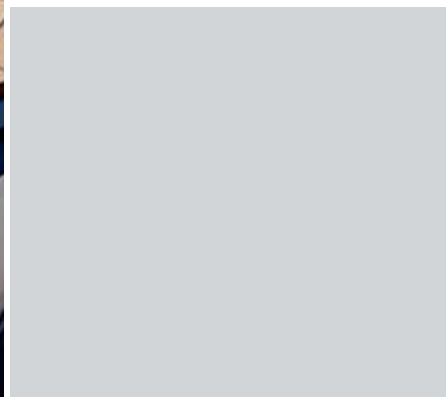
Always guided by simplicity and functionality, nothing is superfluous, we bring you real solutions that meet your practical needs. With features such as the integrated

all-weather canopy and generous, convivial cockpit we ensure you get the most out of your time on the water.

Here are boats with an inner sense of confidence, where understated, classic Scandinavian style meets everyday practicality. Come rain or shine, an Uttern boat is created to take you where you want to be. To freedom within.

Discover the world of Uttern.  
[www.uttern.com](http://www.uttern.com)





# DESIGNED AROUND YOU, BUILT FOR THE REAL WORLD

---

---

Explore hidden shores. Relax on deck. Take a dip from the swim platform. Enjoy sunny days and gentle breezes. Inspired by classic boat design, yet with a thoroughly contemporary feel, an Uttern allows you to escape and discover a sense of natural simplicity. From our trademark classic shapes and flowing symmetry to a strong sense of practicality, so many things come together to make your Uttern boating experience special, wherever your journey takes you.

Whatever the weather, our boats are built to handle Nordic conditions and the unpredictable power of nature. Robust and stable in the water, they are characterised by

their spacious freeboard and conveniently-placed grab rails. A generous cockpit depth and a high line add to the feeling of confidence and safety without restricting access to the water. And should the weather take a turn for the worse, the integrated canopy can be quickly deployed to keep the elements at bay.

This unique combination of safety and comfort is the cornerstone of Uttern design.

If you are seeking even more style to add to our substance, you'll find something truly exuberant and special in the Special Editions.

With their striking orange hull setting off its fluid lines, the Uttern SE is beautifully contemporary, complemented by the simple yet classic feel of the deck.

Together with the finesse of the overall finish, every aspect has been carefully engineered to ensure each feature is integrated seamlessly. With practicality always at its heart, navigation on and off the boat is easy whilst the stern houses a versatile cockpit with ample storage.

Welcome to Uttern, the considered choice.



# D62

WHERE DO YOU WANT TO GO?

The ease of access through bow and stern; the well thought-out cockpit; the seamless integration of the features. The D62 allows intelligent design and engineering to work as one.

From the reassurance of rugged decking to the classic horseshoe seating and bow cabin for sleeping or storage, this is an easy-going experience. Feeling hungry? You're free to quickly convert your cockpit into a relaxed dining area that comfortably seats six people. Looking to soak up the sun? You'll soon be lying in one of the biggest sun decks in its category.

A wealth of stowage under the seats means you'll have plenty of room for all those little extras. Getting on and off board couldn't be easier with access points at the bow and the stern. Anti-slip steps provide extra grip as well as an integrated stainless steel ladder that leaves you ready for every eventuality.

Even the weather won't pose you a problem. A unique integrated canvas canopy neatly stows away when the weather is fine, and can be easily raised should the weather worsen. A high sheer line and a deep cockpit add even more confidence and greater protection in all weathers.

What's more, that attention to detail flows throughout the boat. A specifically shaped locker for the fender maximises the use of available space, large stairs make for safe access to the bow, while a swivel cockpit seat makes this is a very sociable boat.

Descend into the cabin and you'll find everything equally considered there, too. A large foredeck hatch provides good ventilation and lighting as well as plenty of bow storage to help keep everything neat and tidy. A marine flush toilet is available as an option.

Choose our exuberant SE model and you can add even greater style to our substance with its striking orange hull emphasising the boat's fluid lines.

Together, the D62 and D62 SE are designed and built to take you where you want to go, when you want to go. To let you experience more. And always on your terms.





## D62 PRODUCT FEATURES

- |                          |                           |   |
|--------------------------|---------------------------|---|
| 1. Ladder Locker         | 5. Storage under aft seat | 9. Co-pilot storage / cabin access                  |
| 2. Fender storage locker | 6. Storage under seating  | 10. Table and electric cool box storage             |
| 3. Anchor locker         | 7. Deck hatch             | 11. Swivel bolster seat (pilot and co-pilot)        |
| 4. Canopy locker         | 8. Helm                   | 12. Cabin with double berth and optional sea toilet |







## D62 PRODUCT SPECIFICATION

Length overall (m)	6,33	Fuel capacity (l)	160
Beam maximum (m)	2,39	Ce design category	C
Height - without canvas (m)	1,79	Maximum number of people	7
Dry weight without engine (kg)	1135	Maximum power (hp)	200

Simplicity is key on board the D62. The versatile central cockpit table can be quickly pulled up from under the floor hatch for dining – or a sunpad added to the table top to create a generous sundeck area. And when it comes to getting on and off, the D62 makes it all effortless.

There's easy access via bow or stern with sure footing provided by the decking. For added confidence, in addition to an anchor at the stern, the boat is also harnessed at the bow for enhanced balance and stability, while the rub rail provides protection for the hull.





# THE NEW D57

A BIJOU GEM FOR  
SCINTILLATING DAYS OUT

The Uttern D57 is a compact version of our highly popular D62. A Scandinavian-style boat with a soft sporty feel, it takes dining, relaxation and sports in its stride. The trademark Uttern flair for design has been once again put to good use in its design of a new hull, already acclaimed for its dependability and comfort.

Maintaining flexibility and comfort is the key to creating a successful day cruiser, and it is nicely showcased here in the spacious cockpit with its convivial cocktail dining table to seat 5, which simply packs away when required to leave space to stretch out in the sun. An integrated 12v cooler means chilled food and drinks are always on hand even on the longest, warmest days. Easy, stepped access to the water at the stern is combined with a good cockpit depth for a secure feeling on board,

even with young passengers. The addition of a ski mast adds an exhilarating option for those who enjoy their water sports.

A downpour does not spell disaster here, as the full enclosure canopy can be quickly and easily deployed. When not required, the canvas packs neatly away thanks to its integrated canvas storage system, which also has space to store other items such as navigation lights and water ski mast. What's more, this boat also has the best integrated bow-to-stern water management system, featuring gasketed door and bow floor drain.

The D57's large foredeck hatch makes life below deck a light and airy experience whilst 4 storage compartments over the transom help keep life aboard uncluttered and organised.

Behind its good-looking, fun-loving exterior, however, serious thought has gone into providing a range of safety features which come as standard. Hydrologic steering, a sport steering wheel, compass, Smartcraft gages (tach and speedo) and mooring equipment are all there to ensure your journeys go smoothly and safely. For good looks that last, hardwearing antifouling paint finish and laminated teak floors also come as standard.

The premium edition comes with a striking orange hull, premium upholstery and LED courtesy lights. Depending on your requirements, customers also have the possibility of an electrical pack to include a chart plotter with depth sounder and a stereo, with further options for a ski mast and seat and mooring covers.





## D57 PRODUCT FEATURES

- |                           |                                    |  |
|---------------------------|------------------------------------|--|
| 1. Ladder Locker          | 6. Dining table                    | 11. Table and electric cool box storage      |
| 2. Fender storage locker  | 7. Helm                            | 12. Swivel bolster seat (pilot and co-pilot) |
| 3. Anchor locker          | 8. Co-pilot storage / cabin access | 13. Additional mooring/anchor locker         |
| 4. Canopy locker          | 9. Deck hatch                      |  |
| 5. Storage under aft seat | 10. Cabin with double berth        |  |





## D57 PRODUCT SPECIFICATION

Length overall (m)	5,65	Fuel capacity (l)	110
Beam maximum (m)	2,29	CE design category	C
Height - without canvas (m)	1,85	Maximum number of people	6
Dry weight without engine (kg)	920	Maximum power (hp)	150





# T62

TAKE LIFE AS IT COMES,

WITH PLEASURE.

Thanks to its generous, versatile cockpit with a classic horseshoe shape and spacious front deck seating, the T62 makes the ideal environment to spend time with friends and family.

Offering a wide range of practical innovations, the T62's cockpit easily converts into one of the largest sunpads in its class. It equally converts into a comfortable dining area for six. And that's just the start of the fun. There's a dedicated waterskiing pole for whenever the mood takes you and, when you want to really cool down, a wide stern creates a bigger area to make getting into the water easier.

Naturally, where fun is a priority, safety is paramount. That's why the T62 comes with a range of features. A deep cockpit and high freeboards make for greater peace of mind when children are on board. Anti-slip steps keep everyone safe, while conveniently placed handgrips ensure getting on and off the boat is easy – whether that's through the bow or the stern.

And should the weather try to spoil your day, an integrated canvas canopy cleverly hidden within the body of the boat can be quickly deployed to keep everyone happy.

Seeking an even greater sense of fun and style? An exuberant SE model comes complete with a striking orange hull, emphasising its dynamic form and fluid lines even more.

From island hopping to water sports to swimming, the T62 and T62 SE are the boats designed for pure pleasure, for everyday, for life. Let the games begin.





## T62 PRODUCT FEATURES

- |                           |  |  |
|---------------------------|--|--|
| 1. Ladder Locker          | 6. Storage under seating                     | 11. Table and electric cool box storage      |
| 2. Fender storage locker  | 7. Helm                                      | 12. Swivel bolster seat (pilot and co-pilot) |
| 3. Anchor locker          | 8. Co-pilot storage                          | 13. Additional mooring/anchor locker         |
| 4. Canopy locker          | 9. Large storage space under the bow seating |  |
| 5. Storage under aft seat | 10. Convertible sundeck in bow section       |  |







## T62 PRODUCT SPECIFICATION

Length overall (m)	6,33	Fuel capacity (l)	160
Beam maximum (m)	2,39	Ce design category	C
Height - without canvas (m)	1,79	Maximum number of people	7
Dry weight without engine (kg)	1115	Maximum power (hp)	200





# THE NEW T57

THE GREAT ESCAPE

---

You'll have no trouble surrounding yourself with friends and family in this sporty and generously-proportioned bow rider. The T57 has the most capacious bow area in a twin console boat, with a generous u-shaped seating area which converts into a luxurious sun deck, making the perfect environment for relaxing family trips and a sporting day out with friends.

As ever, intelligent use of space is a key feature, so the integrated stowaway compartments include multi-use storage area for bulky sports equipment such as the ski mast but also dedicated storage for the fully enclosed canvas. This is also the only boat with 4 storage compartments over the transom area, so dining, diving, fishing and skiing gear

can all be easily accommodated. A 12v cooler is a welcome option for many, keeping food and drinks delightfully fresh on the longest hottest days.

Uttern's flair for practical features is further showcased with its integrated deck water management system; running from stern to cockpit it features a gasketed door and bow floor drain. The optimal design of the boat marries good cockpit depth with easy access to the water for a secure feeling afloat.

Safety is never optional for us. We include hydraulic steering, a sport steering wheel, Smartcraft gauges and compass all as standard fit. A full complement of mooring equipment is also supplied, ensuring docking is always a breeze. Once safely ashore,

the SecurMark anti-theft system is there for your further peace of mind. The premium edition comes with a striking orange hull, premium upholstery and LED courtesy lights. Customers can further personalise the boat in line with their requirements to add in ski mast, custom seat and mooring covers with an optional electrical pack to include a chart plotter with depth sounder and a stereo plus GPS.

With a wealth of features which are conspicuously absent in its competitors' equivalents, the T57 gives you an enviable combination of space, style, practicality and comfort for convivial days on the water.





## T57 PRODUCT FEATURES

- |                           |  |  |
|---------------------------|--|--|
| 1. Ladder Locker          | 6. Dining table                              | 11. Table and electric cool box storage      |
| 2. Fender storage locker  | 7. Helm                                      | 12. Swivel bolster seat (pilot and co-pilot) |
| 3. Anchor locker          | 8. Co-pilot storage                          | 13. Additional mooring/anchor locker         |
| 4. Canopy locker          | 9. Large storage space under the bow seating |  |
| 5. Storage under aft seat | 10. Convertible sundeck in bow section       |  |





## T57 PRODUCT SPECIFICATION

Length overall (m)	5,65	Fuel capacity (l)	110
Beam maximum (m)	2,29	CE design category	C
Height - without canvas (m)	1,85	Maximum number of people	6
Dry weight without engine (kg)	895	Maximum power (hp)	150





# S62

UNBRIDLED VERSATILITY FOR  
LEISURE WITHOUT LIMITS

Designed with practicality, comfort and flexibility in mind, the S62 has a wealth of intelligent design features to make a day's boating trip a breeze. The flexible layout means it adapts effortlessly to your needs: the bow section seating quickly converts to provide either a dining area for 7 or a spacious sundeck. If the weather turns, a quickly-deployable cockpit canvas provides complete rain cover, whilst integrated water drains on either side of the console help ensure that even in the heaviest downpour the interior remains cosy and dry. When the sun comes out again, the canvas folds away in the integrated storage area beneath the top step.

Safety and ease of movement on board have been maximised. There's the stepped stern design and sturdy fold-out swim ladder giving easy access to the water, the high freeboard maximising the sense of security on board and a large console

storage area designed with front access for greater convenience. The large console storage space also has the option to an integrated sea toilet, unique for a 6m boat.

Not an inch has been wasted in the S62's design, with handy storage spaces for anchor and mooring materials, and storage beneath the rear seat providing a great space for large items such as skis and bags. The bow seats also have large storage spaces beneath which are great for keeping bathing and dining items to hand. There is even space in the bow for a possible additional anchor.

You'll find that the kind of safety equipment which others offer as added extras comes as standard with an Uttern. The S62 comes complete with a chart plotter and depth meter, mooring package and Smartcraft instrumentation. Navigation lights

and electro hydraulic steering ensure smooth and safe navigation. Nor are style and comfort optional extras; anti-fouling paint, laminated teak flooring and console and seat covers and even the USB/MP3 radio are all standard-issue features.

If you want to really push the boat out, you can add your own individual touches for a truly luxurious and unique feel, such as the Special Edition with striking orange hull colour, 7" GPS & Chart Plotter Screen, upgraded upholstery and LED courtesy lights, whilst watersports enthusiasts will appreciate the ski mast option.

With its superior design, intelligent use of space and unbridled versatility in an ultra-compact package, the S62 gives you all the thrills without the spills.





## S62 PRODUCT FEATURES

- |                           |   |  |
|---------------------------|---|--|
| 1. Ladder Locker          | 6. Large storage area underneath seating and console with optional sea toilet | 10. Dining table suited for 7 persons and convertible sundeck in bow section |
| 2. Fender storage locker  | 7. Helm   | 11. Swivel bolster seat (pilot and co-pilot)                                 |
| 3. Anchor locker          | 8. Additional mooring/anchor locker   |  |
| 4. Canopy locker          | 9. Large storage space under the bow seating                                  |  |
| 5. Storage under aft seat |   |  |







### S62 PRODUCT SPECIFICATION

Length overall (m)	6,33	Fuel capacity (l)	160
Beam maximum (m)	2,39	Ce design category	C
Height - without canvas (m)	2,07	Maximum number of people	7
Dry weight without engine (kg)	1103	Maximum power (hp)	200





# S51

## INTELLIGENT DESIGN

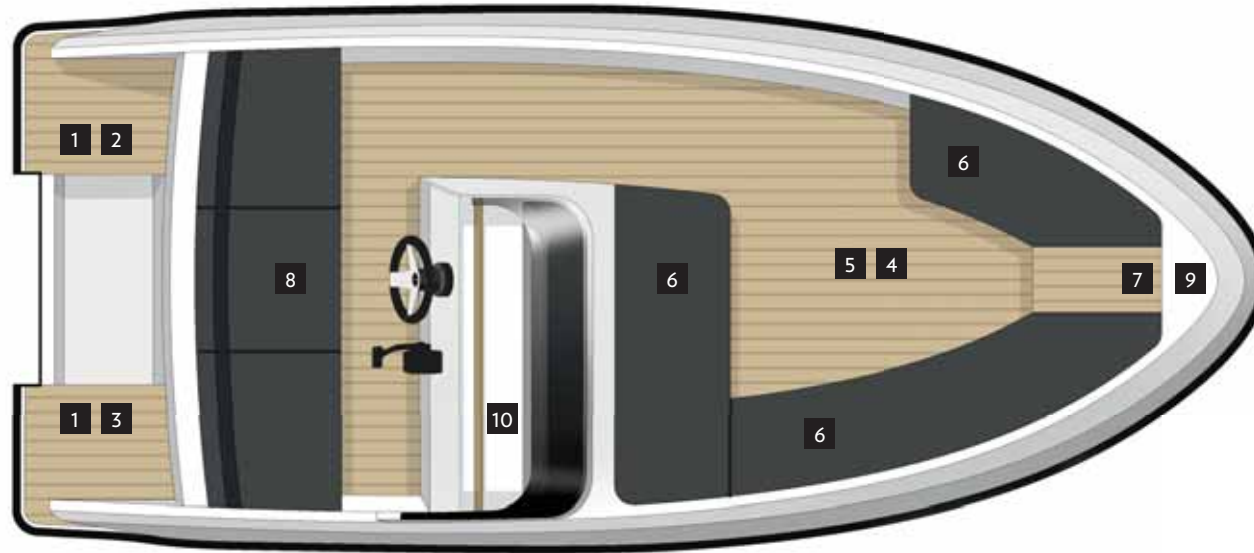
---

The smaller the boat, the more important its design is! This bijou gem is packed with intelligent features to ensure that whatever you want to do, the S51 helps you get the most out of your time on the water. The large bow section can accommodate a table for a fresco dining, then quickly be converted into a sundeck where you can stretch out, relax and soak up the sun. Those who enjoy watersports will find themselves well provided-for with stepped bathing platforms at the stern, integrated swim ladder and ski mast. Equally, those using their boat for transporting goods will find that the bow area clears to create plenty of uncluttered space.

What distinguishes the S51 from many other boats in its category is its ingenious layout, offering unparalleled ease of movement, comfort and convenience. The large side console offers wind protection, whilst the steering wheel is positioned centrally to ensure balanced navigation. The console position also makes it easy to move directly from the rear to the bow. Access is possible either from steps at either stern or bow, and handrails all around the boat ensure that it's always safe and easy to do so.

Not a single inch of space is wasted here, with varied storage beneath all seats. The extended bow seating is long enough to comfortably accommodate items such as skis and fishing rods, an unusual feature on boats of this size, whilst beneath the rear seat is a huge space with an easy-access fiberglass cover. Meanwhile, anchor, ropes, fenders and swim ladder all have dedicated storage spaces, keeping things safely out of the way until needed.





## S51 PRODUCT FEATURES

- |                                 |                                   |                             |
|---------------------------------|-----------------------------------|-----------------------------|
| 1. Double swim platforms        | 5. Removable table                | 9. Additional anchor locker |
| 2. Swim ladder                  | 6. Storage underneath bow seating | 10. Storage for small items |
| 3. Anchor locker                | 7. Stepped access at bow          |                             |
| 4. Convertible bow sundeck area | 8. Storage beneath seating        |                             |





## S51 PRODUCT SPECIFICATION

Length overall (m)	5,01	Fuel capacity (l)	70
Beam maximum (m)	2,08	Ce design category	C
Height - without canvas (m)	1,88	Maximum number of people	6
Dry weight without engine (kg)	690	Maximum power (hp)	90



# FREEDOM TO CHOOSE. THE VERY BEST IN ENGINE POWER AND NAVIGATION.

Choose among our vast range of robust and powerful Mercury outboard engines, MerCruiser Sterndrive Petrol engines, or Mercury Diesel engines, the most appreciated of all time. You'll have the very best and most up-to-the-minute engine power to take your boat out to enjoy the delights of the water.

Moreover, you will benefit from a national and international network of dealers for service.

Additionally, a five-year warranty programme is applicable for all eligible Mercury outboard engines\*. The programme will be offered to owners of new Mercury outboard engines\*\*. The warranty applies to Mercury Verado®, OptiMax® and FourStroke engines purchased in Europe, the Middle East, Africa and the CIS region. The five years of comprehensive factory-backed coverage includes labour for failures caused by defects in material or workmanship. What's more, the new warranty is transferable if the engine is sold within the five-year period. The warranty applies to recreational use only.

\* Conditions and exclusions apply.

\*\* Provided that all extended warranty conditions are met.

## OUTBOARD



Being the "#1 On The Water™" means leading the way in every aspect. From products to service to customer satisfaction, Mercury outperforms the competition at every turn. With Verado® for example, Mercury offers an exclusive engine concept that delivers

super-charged performance with convenience enhancing features that make every boat ride a unique experience. If your passion is water sports then Mercury OptiMax® is your power of choice. Mercury OptiMax® delivers performance with minimal exhaust

emission and fuel consumption. Mercury is the leader in 4 stroke technology with the most modern range of 4 stroke outboards in the industry.

	GENERAL SPECIFICATION												HULL		DECK		DECK EQUIPMENT																	COCKPIT	
	Length overall (m)	Beam maximum (m)	Deadrise (deg)	Height - without canvas (m)	Dry weight (kg)	Fuel capacity (l)	Water capacity - Optional (l)	CE design category	Maximum number of people	Maximum power (hp)	Maximum power (kw)	OB shaft length	Anti-fouling paint	Securmark anti-theft marking	Enclosed canvas	Mooring package	Fenders	Midship fender clips, stainless steel (2 per side)	Grab rails in stainless steel	Windscreen wiper	Ski mast	Swim ladder, stainless steel	Aft anchor/line locker, dedicated, with deadend	Anchor storage	Fwd line locker	Navigation lights	Laminated teak flooring	Real teak flooring	Flag holder, stainless steel	Shower	Bow storage locker	Special edition <sup>3</sup>	Family pack <sup>5</sup>	Electronic pack <sup>6</sup>	Cockpit cushions
<b>D62</b>	6,33	2,39	20	1,79	1135	160	45	C	7	200	147	XL	Std	Std	Std	Std	Std	Std	Std	Opt	Std	Std	Std	Std	Std	Std	Opt	Std	Opt		Opt				Std
<b>D57</b>	5,65	2,29	19	1,85	920	110		C	6	150	110	XL	Std	Std	Std	Std	Std	Std	Std	Opt	Std	Std	Std	Std	Std	Std	Opt	Std			Opt	Opt			Std
<b>T62</b>	6,33	2,39	20	1,79	1115	160	45	C	7	200	147	XL	Std	Std	Std	Std	Std	Std	Std	Opt	Std	Std	Std	Std	Std	Std	Opt	Std	Opt	Std	Opt				Std
<b>T57</b>	5,65	2,29	19	1,85	895	110		C	6	150	110	XL	Std	Std	Std	Std	Std	Std	Std	Opt	Std	Std	Std	Std	Std	Std	Opt	Std		Std	Opt	Opt			Std
<b>S62</b>	6,33	2,39	20	2,07	1103	160	45	C	7	200	147	XL	Std	Std	Opt	Std	Std	Std		Opt	Std	Std	Std	Std	Std	Opt	Std	Opt	Std	Opt				Std	
<b>S51</b>	5,01	2,08	14	1,88	690	70		C	6	90	66,2	L	Std	Std	Opt	Std	Std	Std		Opt <sup>1</sup>	Std	Std	Std		Std	Std	Std		Std		Opt	Opt		Std	

Std Standard Opt Optional 1 Optional with Family pack 2 Optional with Sunkit 3 Special edition option on D/S/T62: orange hull color, dark beige upholstery, upgrade steering wheel, LED cockpit lighting, 7" GPS screen. Special edition option on D57: orange hull color, dark beige upholstery, LED cockpit

# STERNDRIVE



## PERFORMANCE:

- Optimized intake manifold for improved fuel atomization and smoother power delivery
- Revised fuel calibration for crisp acceleration and improved running quality
- Low restriction flame arrestor for added horsepower and torque

## EASY OWNERSHIP:

3-year/300 hour maintenance interval on many periodic service items saves time and money

## TECHNOLOGY:

- Helm-mounted Audio Warning System monitors oil pressure, engine temperature and drive lube level and provides instant alarm if any of these vary from normal range
- Available MerCathode® galvanic corrosion prevention system offers unmatched active electronic corrosion protection
- The Alpha® sterndrive delivers reliable performance in a value package

# MERCURY DIESEL



The advantages of Mercury Diesel engines include outstanding fuel economy and range, higher torque for greater power, durability for longer engine life, instant start-up in cold weather, virtually smoke and odour free, lighter weight/increased power and simplified engine information management. All Mercury Diesel engines are EPA, Tier 2, IMO, RCD and select BSO/SAV certified.

- Mercury Diesel QSD 2.0L (130 hp)
- Mercury Diesel QSD 2.0L (150 hp)
- Mercury Diesel 2.8L DTI (220 hp)

Combining the quiet, smooth performance of a traditional gasoline engine with the added fuel economy, torque and durability of a diesel, this four cylinder compact powerhouse features an advanced ECM with SmartCraft® compatibility to monitor various engine parameters. Both the QSD 2.0L and QSD 2.8L also feature advanced

components like the integrated heat exchanger and exhaust manifold, which also help reduce overall package size. Impressive acceleration and precise throttle response are the result of a 16 valve cylinder head and a proven common rail fuel system that includes a turbocharger and seawater aftercooler.

HELM									CABIN									ELECTRICAL & MECHANICAL SYSTEMS				COVER												
Bow cushions	Sunkit	Storage under cockpit seating	Floor storage locker	Overboard cockpit drain system	Cupholders, stainless steel	12v cool box	Plastic Cockpit Table	Real teak cockpit table	Pilot & copilot seat with flip bolster and swivel	Mechanical Steering	Hydraulic steering	Electro Hydraulic Steering	Sport steering wheel	Dash with instrumentation:	Analog Speedometer & tachometer	Smartcraft Speedometer & Smartcraft tachometer	Fuel & trim gauge	GPS/Chart plotter/Depth Sounder Lowrance 5"	12v electrical socket	Compass	Stereo/CD with 2 speakers	Berth	Deck Hatch - Opening	Cabin cushions	Cabin light	Chemical toilet	Flush toilet with overboard discharge	Bilge pump - electric	Fire extinguisher, portable	Battery Switch	CO monitor	Helm/Copilot Seat Cover	Helm/Copilot Seat & console cover	Mooring cover
	Std	Std	Std	Std	Std	Opt		Std	Std	Std	Opt <sup>7</sup>	Std	Std	Std	Std	Std	Std	Std	Std	Std	Std	2	Std	Std	Std	Opt	Opt	Std	Std	Std	Std			Opt
		Std	Std	Std	Std	Opt	Opt	Std	Std	Std	Std	Std	Std	Std	Std	Std	Std	Opt <sup>8</sup>	Std	Std	Opt <sup>8</sup>	2	Std	Std	Std	Opt		Std	Std	Std	Std	Opt	Opt	Opt
Std	Std <sup>4</sup>	Std	Std	Std	Std	Opt		Std		Std	Opt <sup>7</sup>	Std	Std		Std	Std	Std	Std	Std	Std	Std						Std	Std	Std				Opt	
Std	Opt	Std	Std	Std	Std	Opt	Opt	Std	Std	Std	Std	Std	Std	Std	Std	Std	Std	Opt <sup>8</sup>	Std	Std	Opt <sup>8</sup>						Std	Std	Std			Opt	Opt	
Std	Opt	Std		Std	Std	Opt	Opt <sup>2</sup>	Std		Std	Opt <sup>7</sup>	Std	Std		Std	Std	Std	Std	Std	Std	Std				Std	Opt	Opt	Std				Std		
Std	Opt <sup>1</sup>	Std		Std	Std		Opt <sup>1</sup>		Std	Opt		Std	Std	Std	Std	Std	Opt <sup>8</sup>	Std	Std	Opt <sup>8</sup>					Std	Opt	Opt	Std	Std	Std			Std	

lighting 4 the bow sunkit is optional 5 Family pack option: bow table, bow sundeck, ski mast 6 Electronic pack option: GPS, Radio/CD/MP3 7 Optional with Verado Rigging 8 Optional with Electronic pack

Discover the world of Uttern and our International Dealer Network  
[www.uttern.com](http://www.uttern.com)



**UTTERN**



The quality system of Brunswick  
Marine in EMEA  
is ISO 9001:2000 certified.

© 2013 Brunswick Marine in EMEA. All Rights Reserved.

Brunswick Marine in EMEA continuously explores means to improve the products it designs, manufactures and distributes. Every effort is made to produce sales and service literature which is current. Changes to specifications of engines, boats and accessories are ongoing. This brochure should not be regarded as a precise guide to the latest specifications. This brochure is also not an offer for sales of any particular engine, boat or accessory. Distributors and dealers are not agents of Brunswick Marine in EMEA or one of its affiliates and they have no authority to bind Brunswick Marine in EMEA by any express undertaking or representation, including but not limited to representations of product, sales, applications or service nature. Not all products are available in all countries and some are available only in limited quantities. Some products shown in this catalogue are equipped with optional accessories. Please see your local dealer.